

# Deadbolts

## DEADBOLTS

### Functions

Single Cylinder (101 RP) FIG. 6 (101 RQ) FIG. 10. Feature low profile trim (FIG. 9) designs which coordinate with all of our lever and knob styles. Include concealed mounting screws.

### Styles

RT Traditional  
RP Plain  
RQ Square

### Door Thickness

Standard = 1.3/4". For 1.3/8" doors or any other size, please specify.

### Backset

Standard = 2.3/8". For 2.3/4" please specify.

2" backset is also available upon special request. 03/brass finish only.

### Latch Bolt

1" throw with two hardened steel rods inside bolt for added security to resist sawing.

### Latch face

2" and 2.3/8" backset = 2.1/4" x 1"

2.3/4" backset = 2.1/4" x 1.1/8"

### Strike Plate

2.3/4" x 1.1/8" heavy duty for both wood and metal door jambs. Square corner.

### Cross Bore

Deadbolts fit into a standard 2.1/8" cross bore hole with a 1" edge bore.

### Cylinder

Solid brass, 5-pin, mortise cylinder with C-keyway.

## PRIVACY BOLTS

### Styles

105 RST=Traditional 105 RSP=Plain 105/K1225 RSQ FIG. 7 105 RSQ=SQUARE

Decorative thumbturn with emergency coin key release on exterior. Include concealed mounting screws.

Privacy bolts are also available with escutcheon plates (specify 106).

### Door Thickness

Standard=1.3/4". For 1.3/8" or any other size, please specify.

### Backset

Standard=2.3/8". For 2.3/4" please specify.

### Latch Bolt

1/2" throw with 2.1/4" x 1" face plate.

### Strike Plate

2.3/4" x 1.1/8". Square corner.

## ESCUTCHEONS WITH DEADBOLTS

### Functions

Passage with single cylinder (103) FIG. 8 or double cylinder (104) deadbolt.

Dummy available to match refer to interior sets. Escutcheon plates are also available with a privacy bolt (specify 106).

NEP plates not available with deadbolts.

### Styles

ET Traditional style  
EP Plain style  
ER Rectangular style

Escutcheon plate styles will cover a 2.1/8" cross bore hole. Heavy-duty, spring-loaded housings (X2124M) are included for added strength and durability. (Not supplied with knob sets.)

### Door Thickness

Standard=1.3/4". For 1.3/8" doors or any other size, please specify.

### Backset

Standard=2.3/8". For 2.3/4" please specify.

### Passage Latch

1/2" throw with a 2.1/4" x 1" face plate. 8mm square hub size.

### Deadbolt Latch

1" throw with two hardened steel rods inside bolt for added security to resist sawing.

2.3/8" backset has a 2.1/4" x 1" face plate.

2.3/4" backset has a 2.1/4" x 1.1/8" face plate.

### Strike plates

Passage latch=T-strike 2.3/4" x 1.1/8" Lip size=1.1/4".

Deadbolt latch=2.3/4" x 1.1/8" heavy duty for wood and metal door jambs.

### Cross Bores

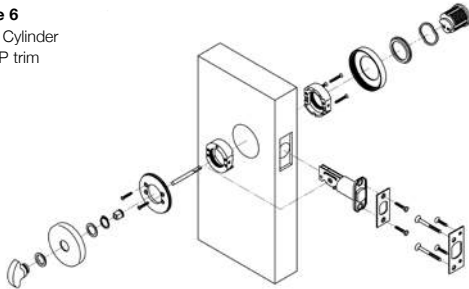
Passage and deadbolt latches fit any standard 2.1/8" cross bore hole.

Both latches require a standard 1" edge bore.

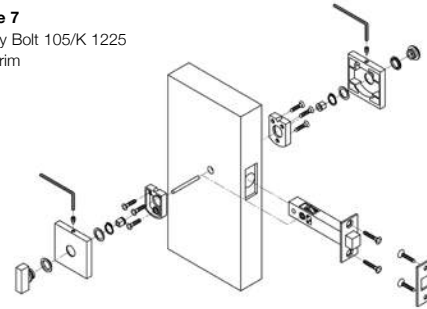
### Cylinder

Solid brass, 5-pin, mortise cylinder with C-keyway.

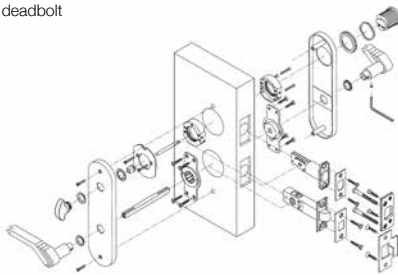
**Figure 6**  
Single Cylinder  
101 RP trim



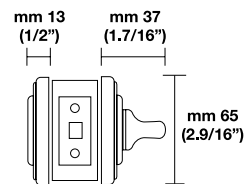
**Figure 7**  
Privacy Bolt 105/K 1225  
RSQ trim



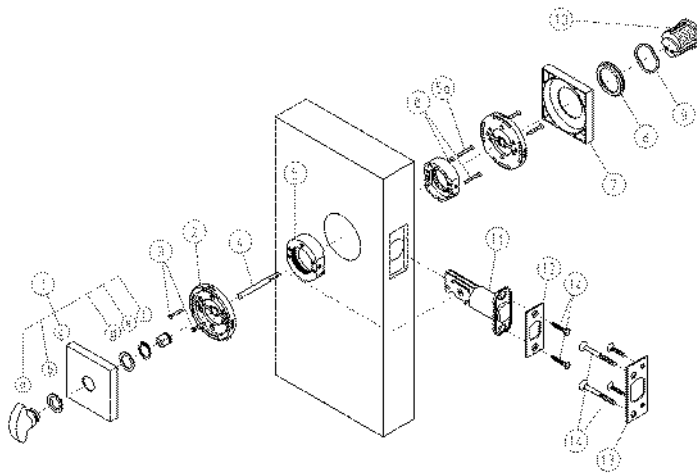
**Figure 8**  
Escutcheon with deadbolt  
103 EP trim



**Figure 9**  
Single Cylinder deadbolt 101



**Figure 10**  
Model Single Cylinder deadbolt  
101 RQ trim



**Parts List**

1. Interior Rosette (1) includes:
  - a) thumbturn
  - b) nylon washer
  - c) rosette
  - d) metal washer
  - e) C-clip
  - f) nylon bushing
2. Under rosette (2)
3. 5/8" screws for under rosette (2)
4. Tailpiece (1)
5. Cylinder housing (1) includes 1.1/8" housing assembly screw
6. 1.1/8" cylinder housing screws (2)
7. Exterior rosette (1)
8. Cylinder collar (1)
9. Wave washer (1)
10. Cylinder with 2 keys (1)
11. Latch (1)
12. Face plate (1)
13. Strike plate (1)
14. Wood screws (6)
15. Allen wrench (not illustrated) (1)