

Installation templates

TRIM: RP - RT - RPS - RQ - RQS

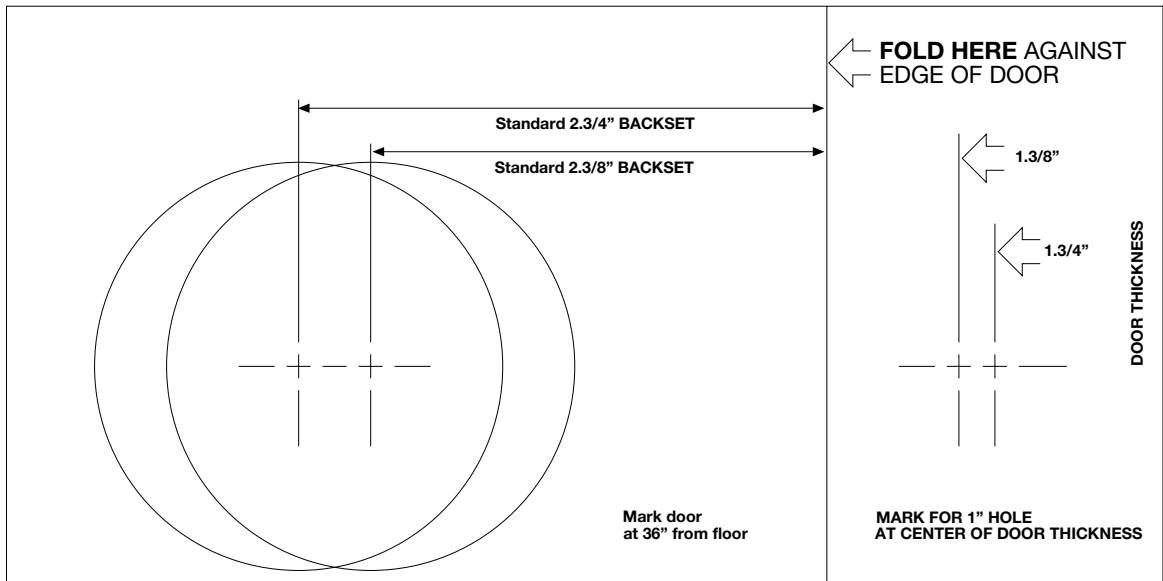
Valli&Valli (U.S.A.) INC.

ROUND ROSETTE LOCKSET AND DEADBOLT INSTALLATION TEMPLATE

IMPORTANT NOTE

If door is beveled, place template on low side of door bevel. Determine before drilling, length of latch enclosed for proper backset installation. Read instruction sheet before installing lock.

Mark proper center for 2.1/8" diameter cross bore hole according to lockset requirement.



TRIM: RS - RSS - RSQS - 105

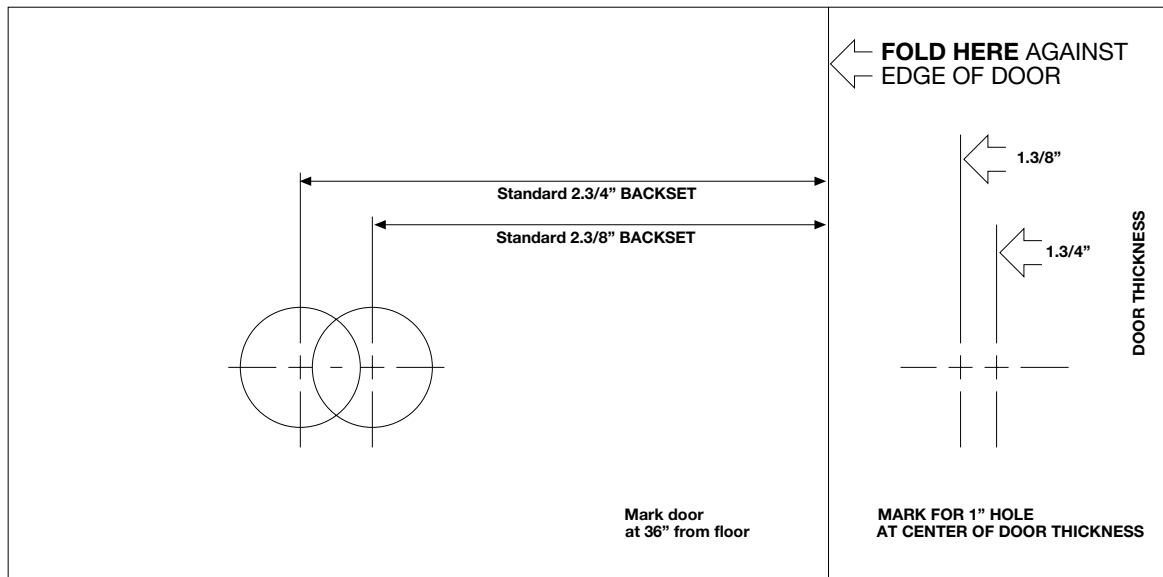
Valli&Valli (U.S.A.) INC.

ROUND ROSETTE LOCKSET INSTALLATION TEMPLATE

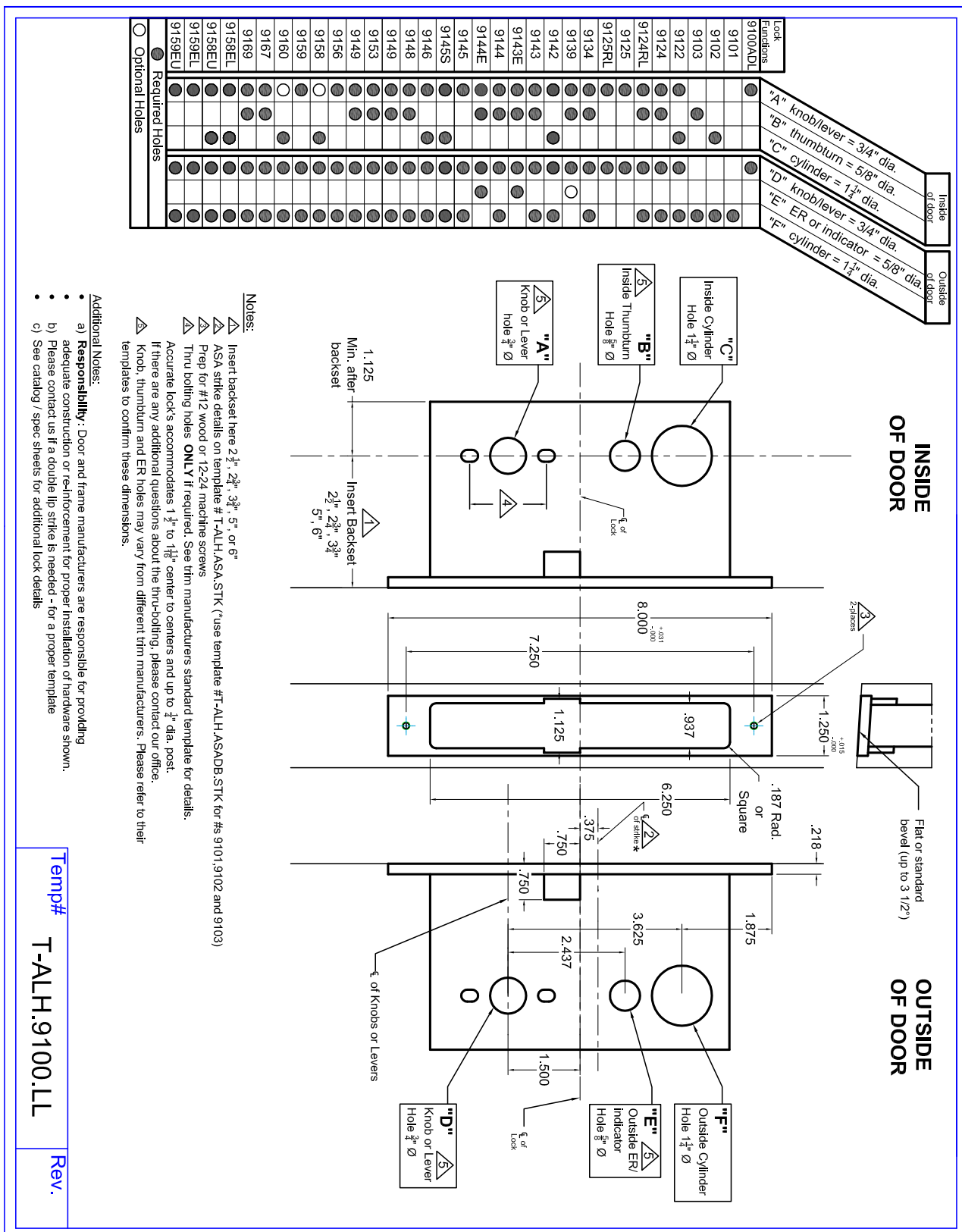
IMPORTANT NOTE

If door is beveled, place template on low side of door bevel. Determine before drilling, length of latch enclosed for proper backset installation. Read instruction sheet before installing lock.

Mark proper center for 5/8" diameter cross bore hole according to lockset requirement.



ML F Entry Template Lever x Lever

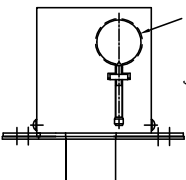
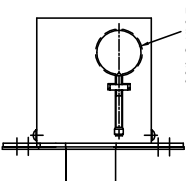
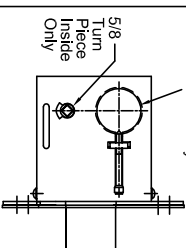


Dead Lock Template

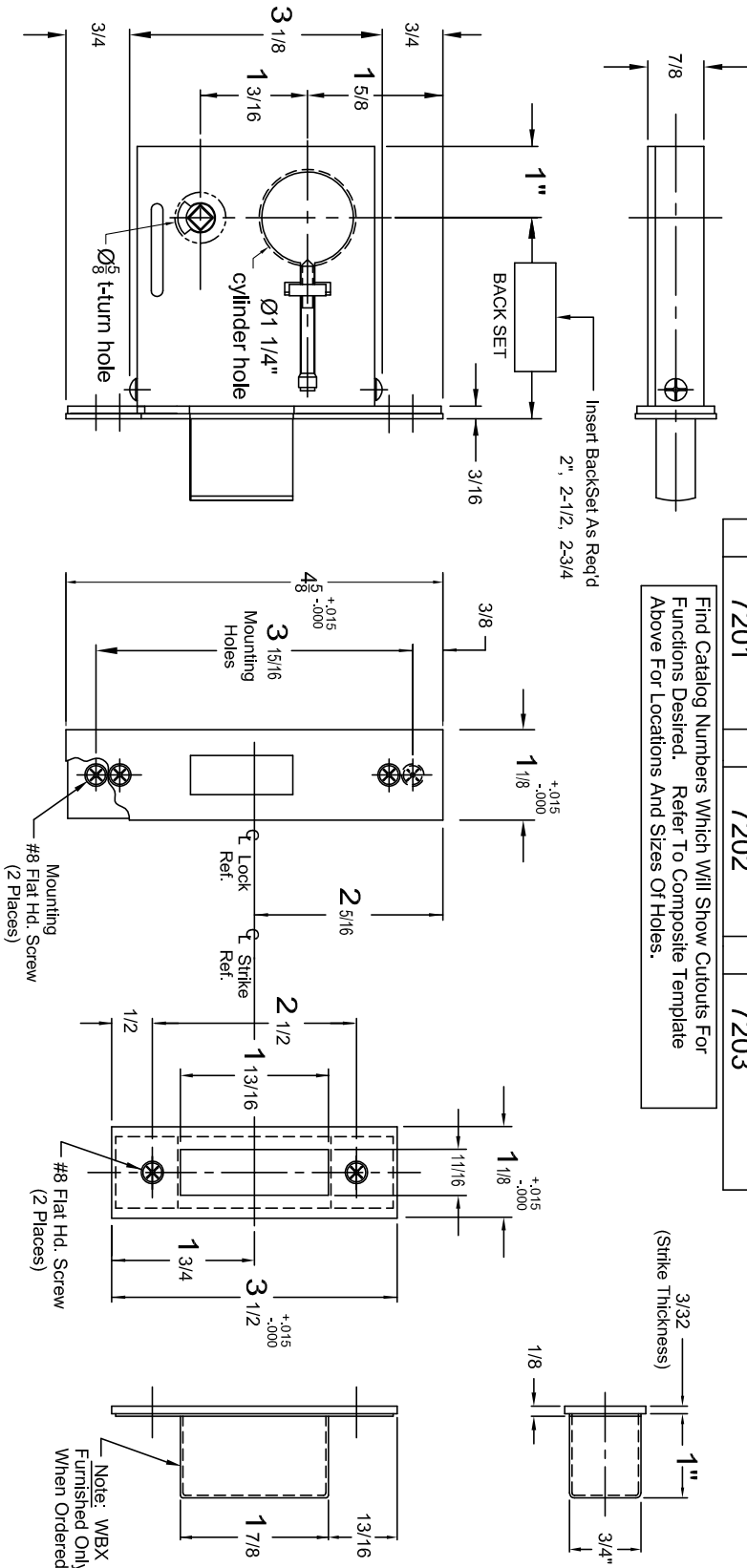
7200 Series

Auxiliary Dead Lock Installation Template

Note: All Dimensions Reflect Suggested Mortise Prep Dimensions.
(Actual Lock Dimensions Are Slightly Smaller).

7201	 <p>1 1/4 Cylinder Outside Only</p>	7202	 <p>1 1/4 Cylinder Both Sides</p>	7203	 <p>1 1/4 Cylinder Outside Only 5/8 Turn Piece Inside</p>
------	---	------	--	------	--

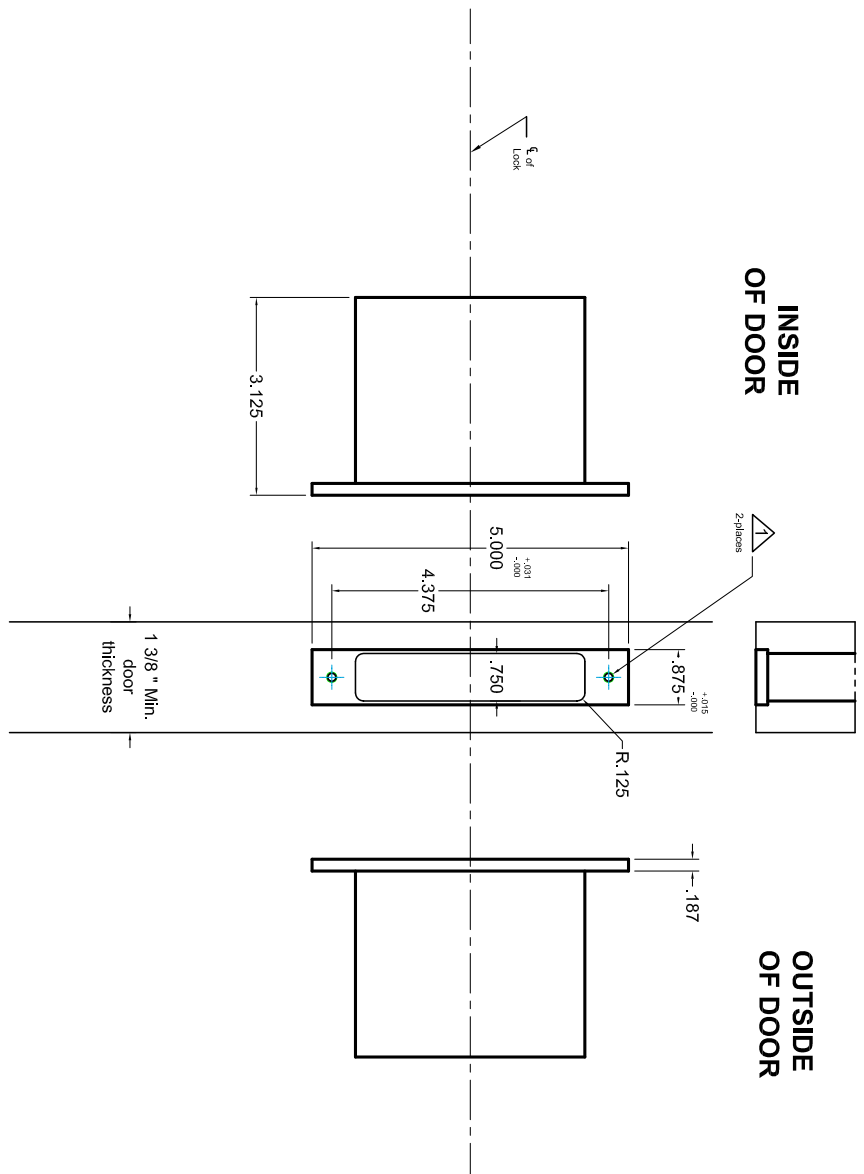
Find Catalog Numbers Which Will Show Cutouts For Functions Desired. Refer To Composite Template Above For Locations And Sizes Of Holes.



Responsibility
Door And Frame Manufacturers Are Responsible For Providing Adequate Construction Or Re-Inforcement For Proper Installation Of Hardware Shown.

Template PGE Pocket Pull

For K1215 see page 105



Notes:

△ Prep for #8 wood or 8-32 machine screws.

Additional Notes:

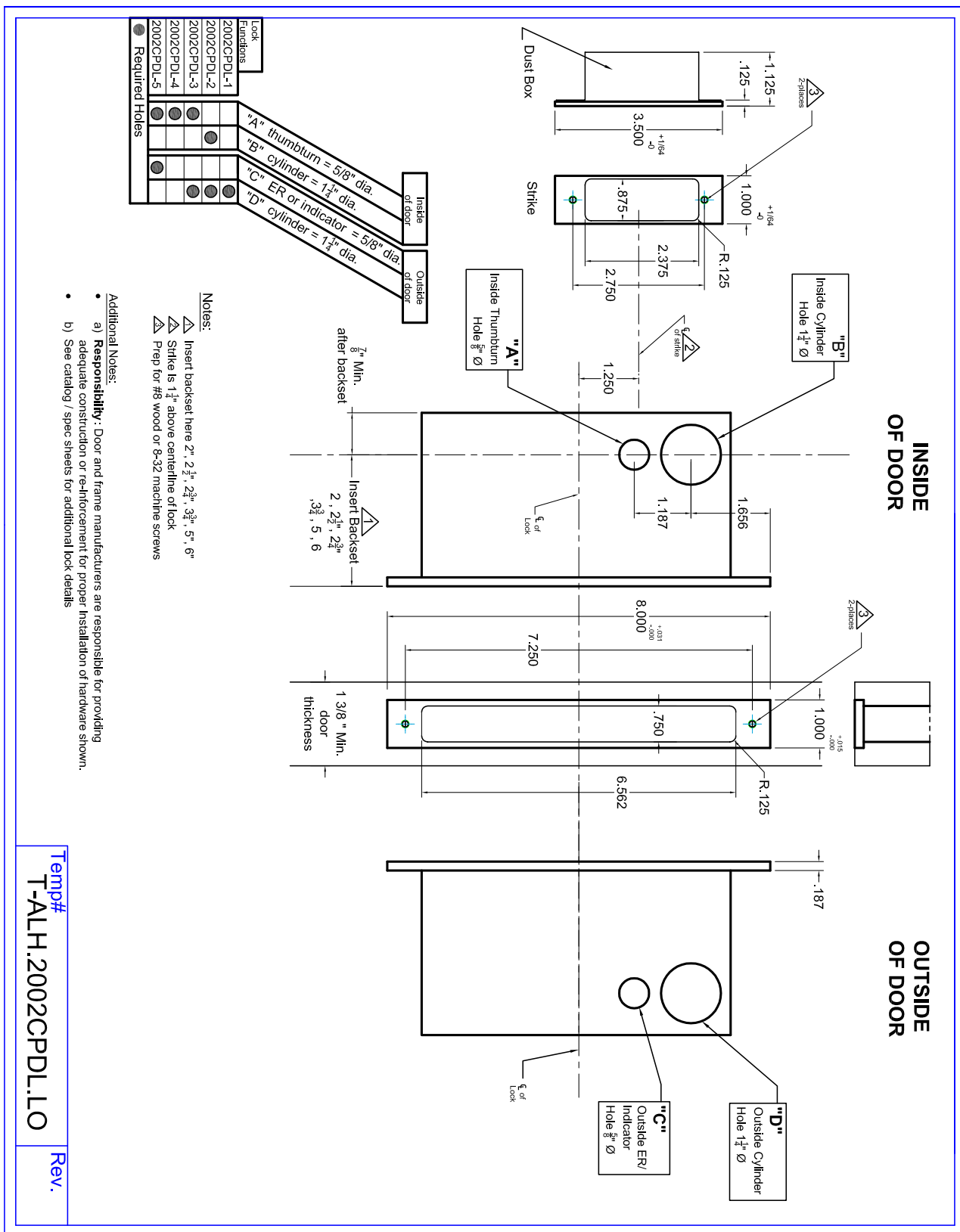
- a) **Responsibility:** Door and frame manufacturers are responsible for providing adequate construction or re-inforcement for proper installation of hardware shown.
- b) See catalog / spec sheets for additional lock details

Temp#
T-ALH.2000.LO

Rev.

Template PCY Pocket Door Lock

For K1215 see page 105



Template ASA Strike

